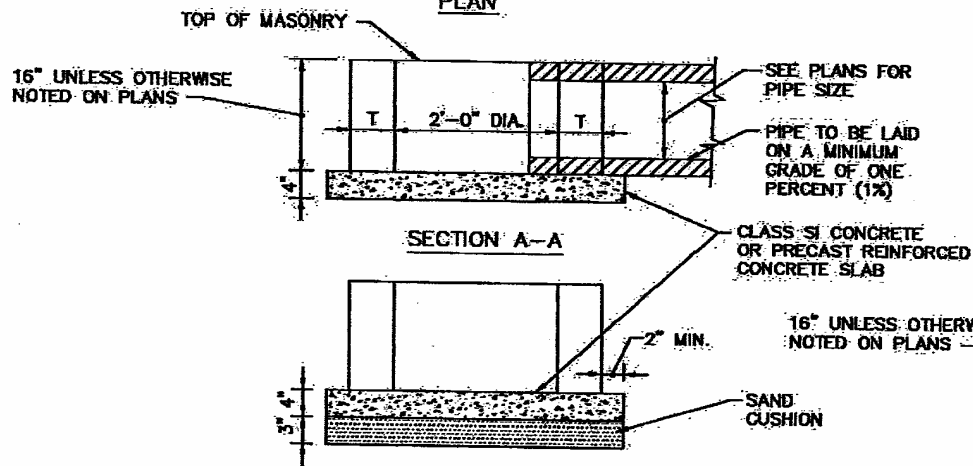


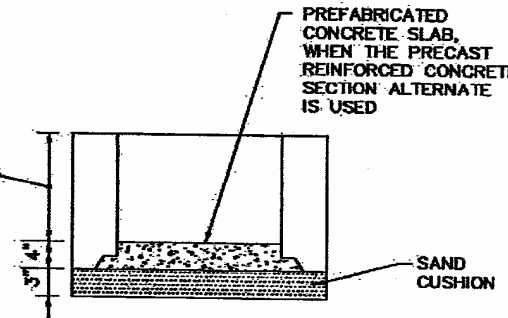
PLAN



SECTION A-A

CASTING SCHEDULE:	
LOCATION	EJW
B OR M6.12 C&G	7235 M2
DEPRESSED CURB	7210 M3
PAVED	1050
NON-PAVED	1020

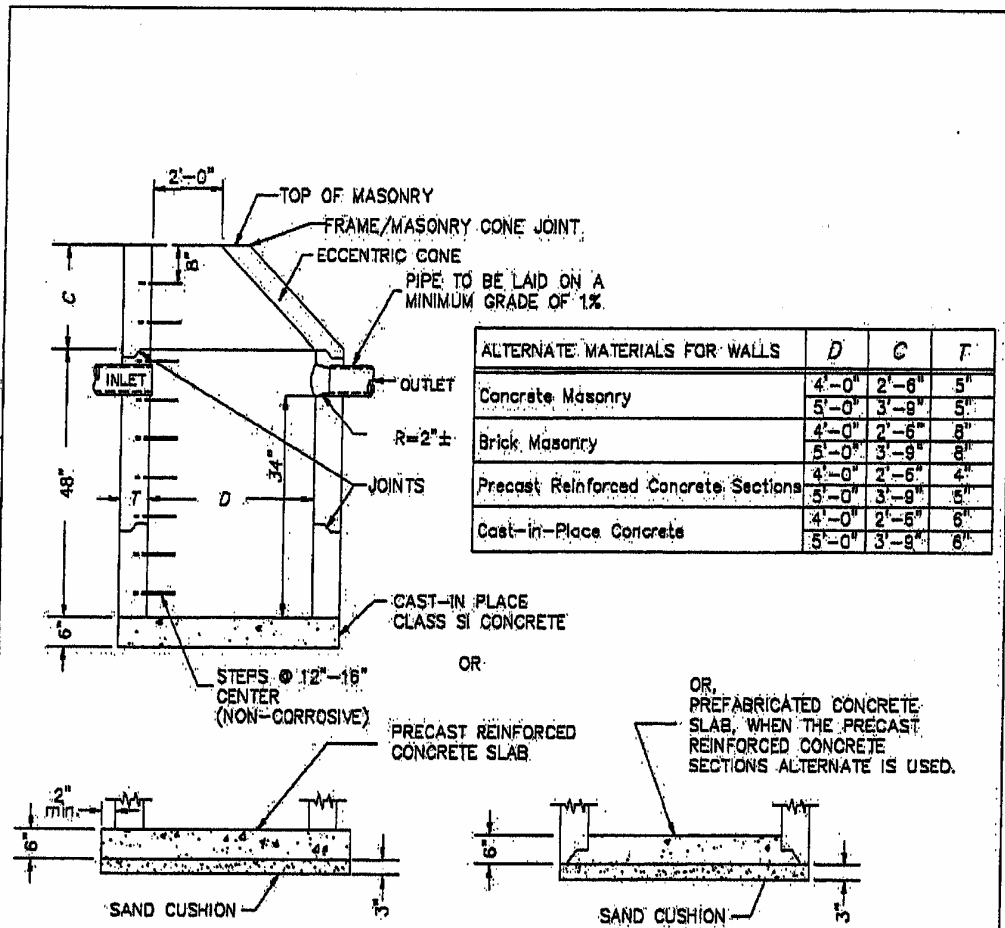
ALTERNATE MATERIALS FOR WALLS	T
PRECAST REINFORCED CONCRETE SECTIONS	3"
CONCRETE MASONRY UNITS	5"
CAST-IN-PLACE CONCRETE	6"
BRICK MASONRY	8"



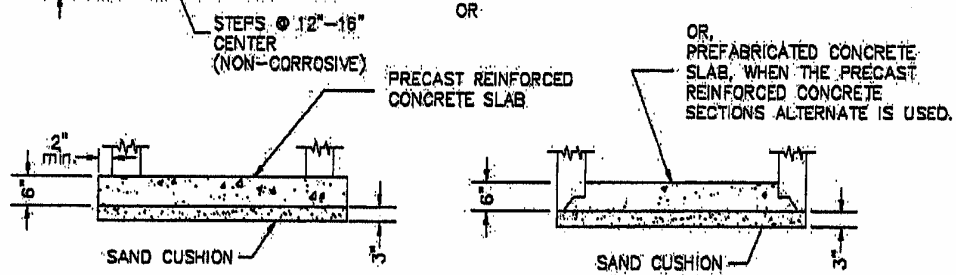
IN ADDITION TO THE REQUIREMENTS OF ART. 602 OF THE STANDARD SPECIFICATIONS, THE CONTRACT UNIT PRICE FOR INLET, TYPE A SHALL INCLUDE THE SAND CUSHION, WHEN REQUIRED, AND FURNISHING AND COMPACTING OF THE SPECIFIED BACKFILL MATERIAL.

VILLAGE OF LAKE IN THE HILLS	REVISIONS		
PUBLIC WORKS DEPARTMENT	NO.	BY	DATE
APPROVED 00-00-00			

STORM INLET TYPE A



ALTERNATE MATERIALS FOR WALLS	D	C	T
Concrete Masonry	4'-0"	2'-6"	5"
	5'-0"	3'-9"	5"
Brick Masonry	4'-0"	2'-6"	8"
	5'-0"	3'-9"	8"
Precast Reinforced Concrete Sections	4'-0"	2'-6"	4"
	5'-0"	3'-9"	5"
Cast-in-Place Concrete	4'-0"	2'-6"	6"
	5'-0"	3'-9"	6"



All Catch Basins shall be 4'-0" in diameter unless otherwise noted on plans.

In addition to the requirements of Art. 602.15 of the standard Specifications the contract unit price for Catch Basins, Type A shall include the sand cushion when required, furnishing and placing steps when required, and furnishing and compacting the specified backfill material.

Dimension "C" for Precast Reinforced Concrete sections may vary from the dimension given to plus 6 inches.

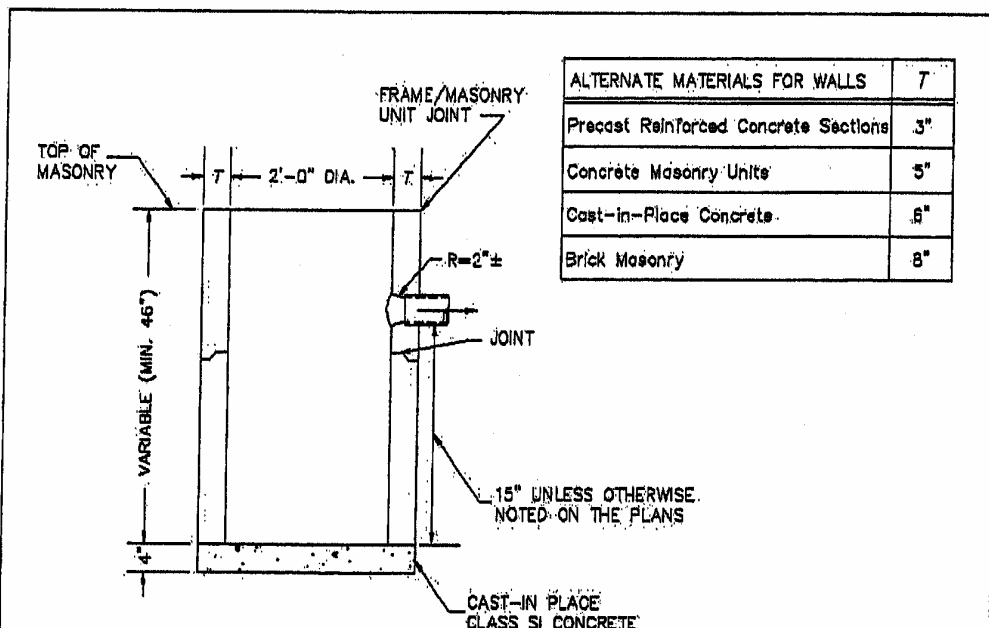
Joints are to be made watertight with external sealing bands per ASTM C-877 w/mechanical straps (Mac Wrap or equal).

External chimney seal to be installed on catch basin frame/masonry cone joint. (Not required for catch basins in grassy areas).

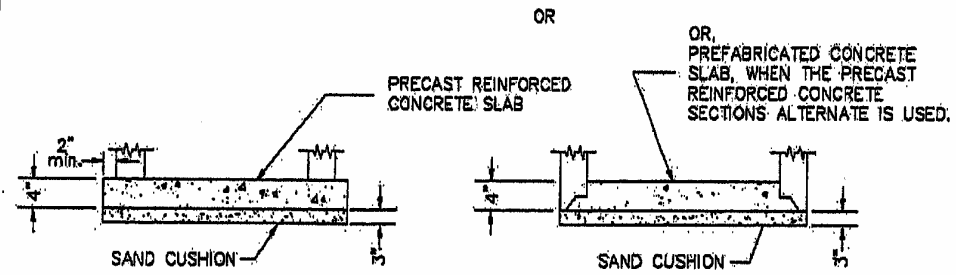
VILLAGE OF LAKE IN THE HILLS PUBLIC WORKS DEPARTMENT APPROVED 00-00-00	REVISIONS		
	NO.	BY	DATE

CATCH BASIN
TYPE A

SS-2



ALTERNATE MATERIALS FOR WALLS	7
Precast Reinforced Concrete Sections	3"
Concrete Masonry Units	5"
Cast-in-Place Concrete	6"
Brick Masonry	8"



In addition to the requirements of Art. 602.15 of the standard Specifications the contract unit price for Catch Basins, Type C shall include the sand cushion when required; and furnishing and compacting the specified backfill material.

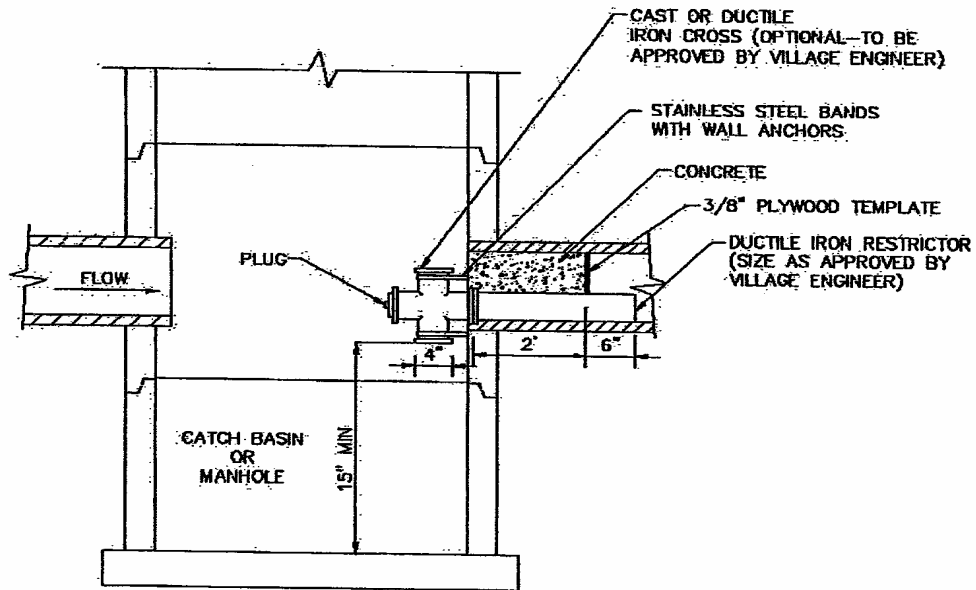
Joints are to be made watertight with external sealing bands per ASTM C-877 w/mechanical straps, (Mac Wrap or equal).

External chimney seal to be installed on catch basin frame/masonry unit joint. (Not required for storm manholes in grassy areas).

VILLAGE OF LAKE IN THE HILLS PUBLIC WORKS DEPARTMENT APPROVED 00-00-00	REVISIONS		
	NO.	BY	DATE

CATCH BASIN
TYPE C

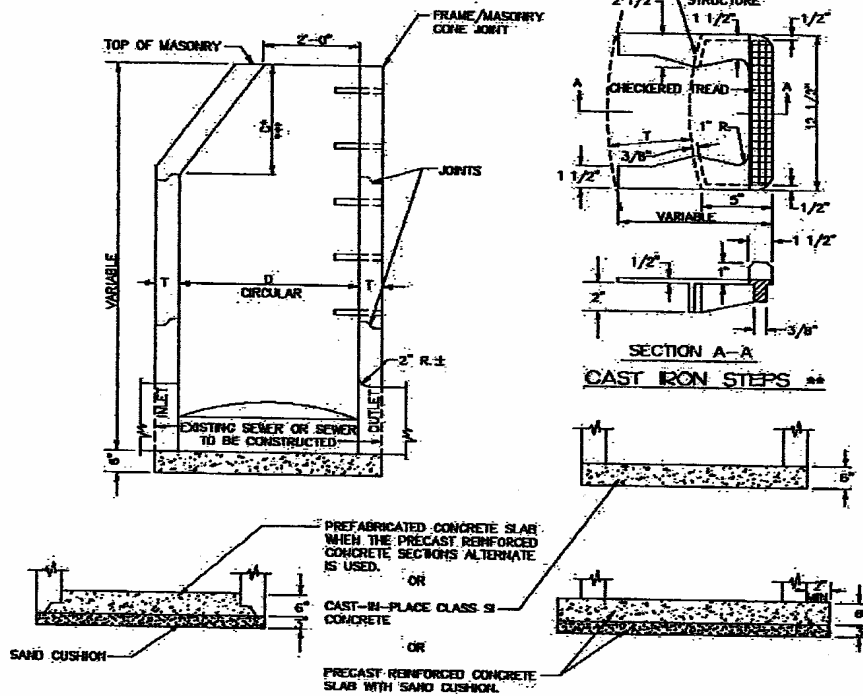
SS-3



VILLAGE OF LAKE IN THE HILLS PUBLIC WORKS DEPARTMENT APPROVED 00-00-00	REVISIONS		
	NO.	BY	DATE

RESTRICTOR DETAIL

PLAN - ECCENTRIC



ALTERNATE MATERIALS FOR WALLS	D	C	T (MIN)
CONCRETE MASONRY UNITS	2'-0"	2'-0"	5"
BRICK MASONRY	2'-0"	2'-0"	5"
PRECAST REINFORCED CONCRETE SECTIONS	2'-0"	2'-0"	5"
CAST-IN PLACE CONCRETE	2'-0"	2'-0"	5"

NOTES:
 * DIMENSION "C" FOR PRECAST REINFORCED CONCRETE SECTIONS MAY VARY FROM THE DIMENSION GIVEN TO PLUS 6 INCHES.

** THE CAST IRON STEPS AS DETAILED HEREON ARE TYPICAL STEPS OF OTHER DESIGN AND MATERIAL THAT WILL CONFORM TO THE MINIMUM REQUIREMENTS OF THE STEPS SHOWN, MAY BE USED WHEN APPROVED BY THE VILLAGE ENGINEER.

*** FOR OPTIONAL PRECAST CONCRETE FLAT SLAB TOP REFER TO STANDARD 2354 (SS-7).

IN ADDITION TO THE REQUIREMENTS OF ART. 602 OF THE STANDARD

FOR MANHOLES, TYPE A SHALL INCLUDE THE SAND CUSHION WHICH REQUIRED, FURNISHING AND INSTALLING STEPS WHEN REQUIRED, AND FURNISHING AND COMPACTING THE SPECIFIED BACKFILL SPECIFICATIONS, THE CONTRACT UNIT PRICE MATERIAL.

NON-CORROSIVE PLASTIC COATED CAST IRON STEPS SHALL BE GRAY IRON CONFORMING TO THE REQUIREMENTS OF ART. 100B.14 OF THE STANDARD SPECIFICATIONS.

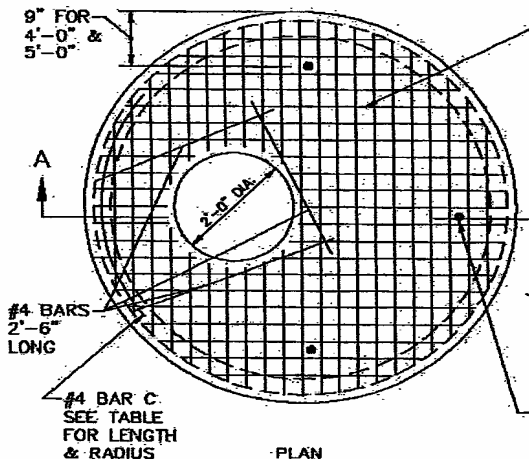
STEPS SHALL BE EMBEDDED INTO WALL A MINIMUM OF 3 INCHES. STEPS SHALL NOT BE EXTENDED ON THE OUTSIDE.

JOINTS ARE TO BE MADE WATERTIGHT WITH EXTERNAL SEALING BANDS PER ASTM C-877 W/MECHANICAL STRAPS (MAC WRAP OR EQUAL)

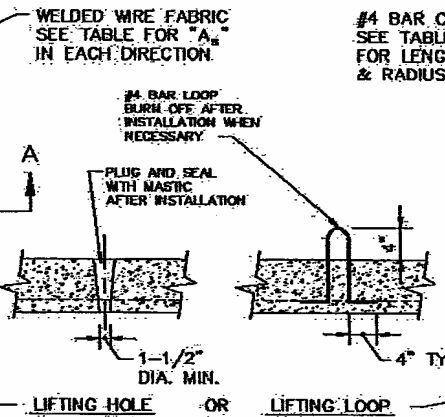
EXTERNAL CHIMNEY SEAL TO BE INSTALLED ON MANHOLE FRAME/MASONRY CONE JOINT. (NOT REQUIRED FOR STORM MANHOLES IN GRASSY AREAS).

VILLAGE OF LAKE IN THE HILLS PUBLIC WORKS DEPARTMENT APPROVED 00-00-00	REVISIONS		
	NO.	BY	DATE

STORM MANHOLE DETAIL TYPE A

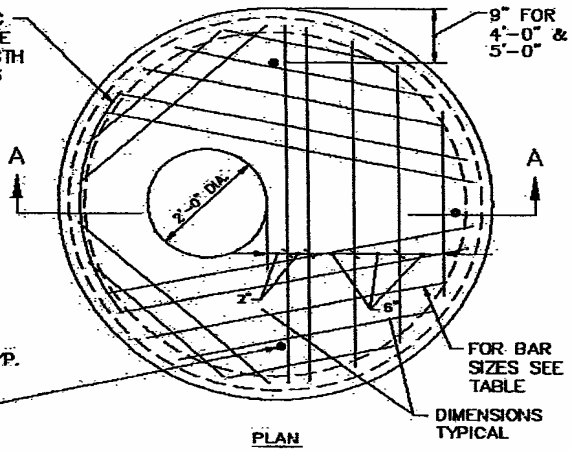


PLAN
SHOWING WELDED WIRE FABRIC



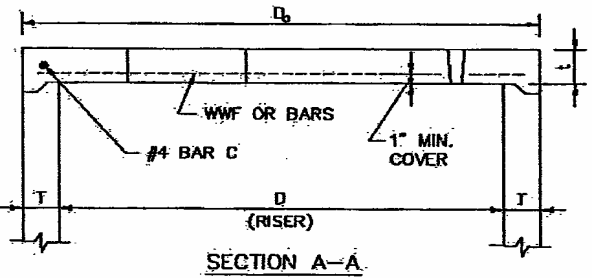
(TYPICAL 3 PER SLAB)
REINFORCEMENT

D	T	W	t	"A" WWF OR BAR SIZE	#4 BAR C LENGTH	#4 BAR C RADIUS
4'-0"	6"	10	1/2"	30 SB W/L/FL. FC. TYP.	4'-6"	2'-2"
5'-0"	6"	10	1/2"	30 SB W/L/FL. FC. TYP.	5'-0"	2'-6"
5'-0"	6"	10	1/2"	30 SB W/L/FL. FC. TYP.	5'-6"	3'-2"

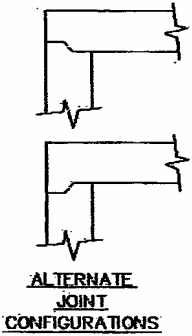


PLAN
SHOWING RE-BAR REINFORCEMENT WITH TYPICAL PLACEMENT

- NOTES:
1. PRECAST FLAT TOPS SHALL CONFORM TO SECTION 602 OF THE STANDARD SPECIFICATIONS.
 2. REINFORCEMENT BARS OR WELDED WIRE FABRIC SHALL BE IN ACCORDANCE WITH ARTICLE 1020 OF THE STANDARD SPECIFICATIONS.
 3. JOINT CONFIGURATION AND DIMENSIONS SHALL MATCH AND FIT THE RISER JOINT DETAIL.
 4. LIFTING DEVICES OTHER THAN THAT SHOWN MAY BE USED SUBJECT TO APPROVAL BY THE VILLAGE ENGINEER.
 5. THE FLAT SLAB TOP MAY BE USED IN LIEU OF THE TAPERED TOPS SHOWN ON STANDARDS 1514, 1525, 1527, OR 1866, AT THE OPTION OF THE CONTRACTOR OR WHEN FIELD CONDITIONS PROHIBIT THE USE OF TAPERED TOPS.
 6. THE COST OF FURNISHING AND INSTALLING THE FLAT SLAB TOP SHALL BE INCLUDED IN THE UNIT PRICE FOR CATCH BASINS OR MANHOLES.



SECTION A-A



ALTERNATE JOINT CONFIGURATIONS

VILLAGE OF LAKE IN THE HILLS	REVISIONS		
PUBLIC WORKS DEPARTMENT	NO.	BY	DATE
APPROVED: 1-19-99			

ECCENTRIC FLAT TOP FOR STORM MANHOLES