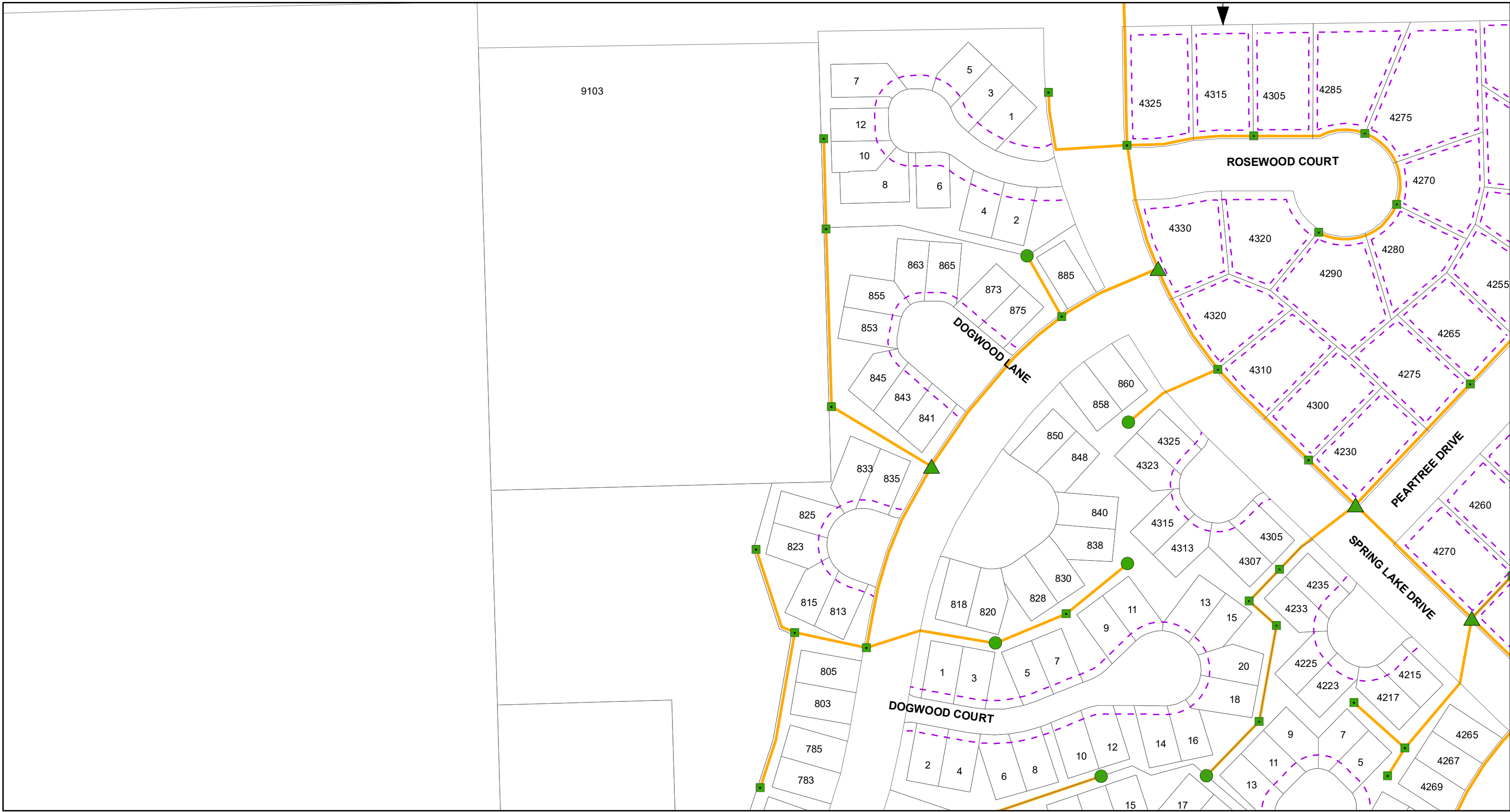


# i3 Broadband Permit Request - NWCHIL2001



**Legend**

- Sector Boundary
- Utility Easement
- Parcels

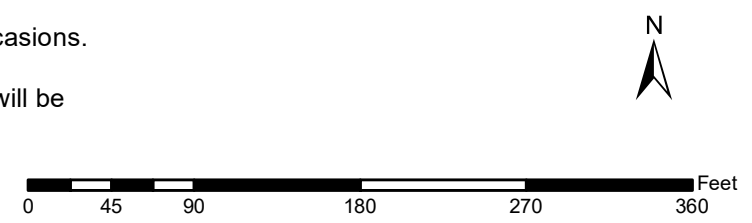
**Handhole**

- HDPE 9"x14"
- HDPE 12"x20"
- HDPE 17"x30"

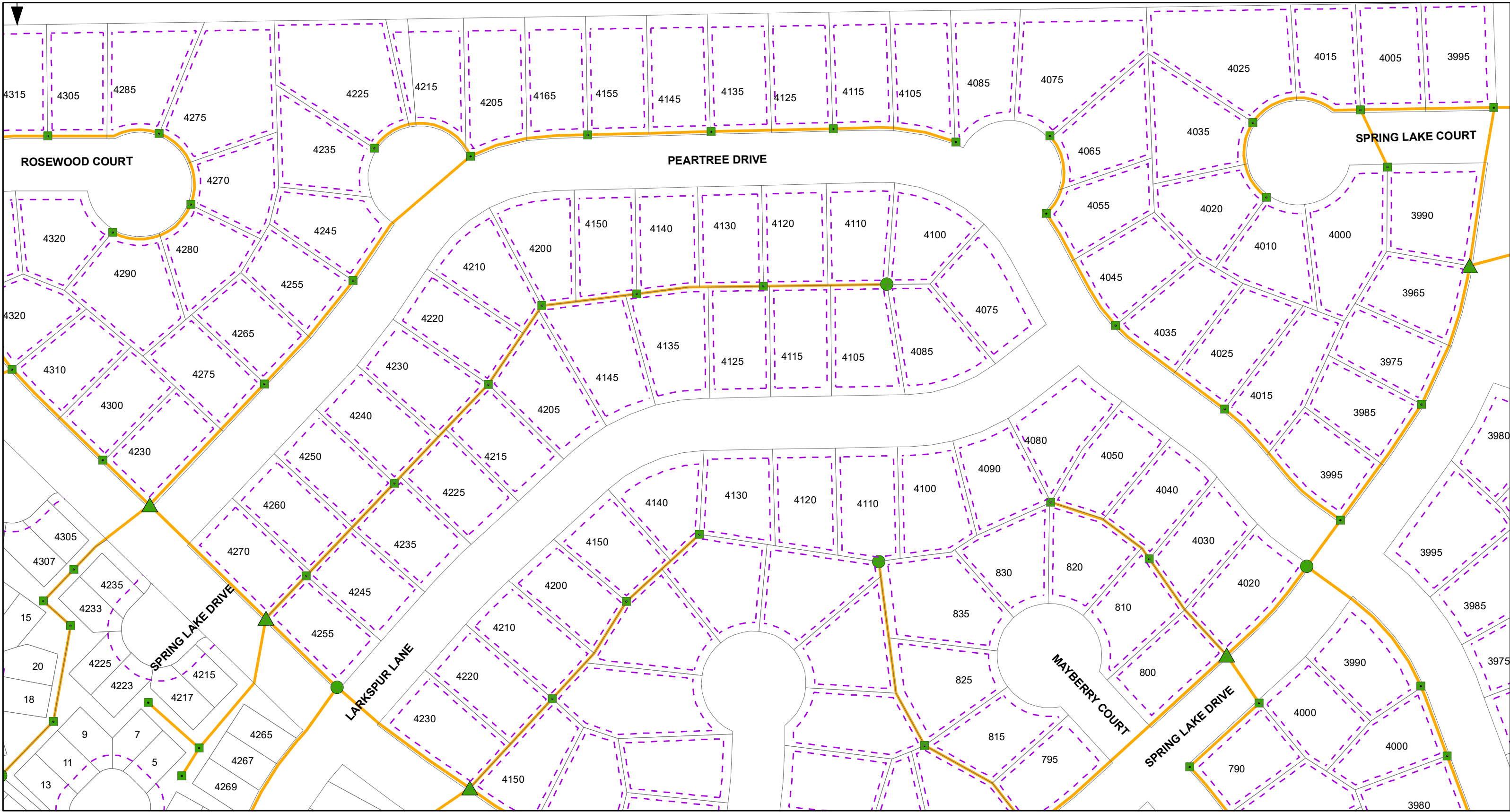
1 Tier 15 12"x12"  
1 Tier 15 11"x18"  
3 Tier 15 17"x30"

Duct(s)

- Conduit installation will be done by directional and missile bore.  
 - Standard installation is (1) or (2) 1.25" HDPE conduits. A 3rd 1.25" conduit may be added on rare occasions.  
 - When in ROW, handholes will be installed within 1' of ROW line, and path of duct/fiber will be within 5' of ROW line. Any needed variance to this placement will be requested in advance and completed only upon approval

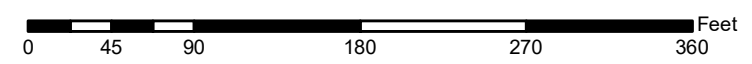


# i3 Broadband Permit Request - NWCHIL2001

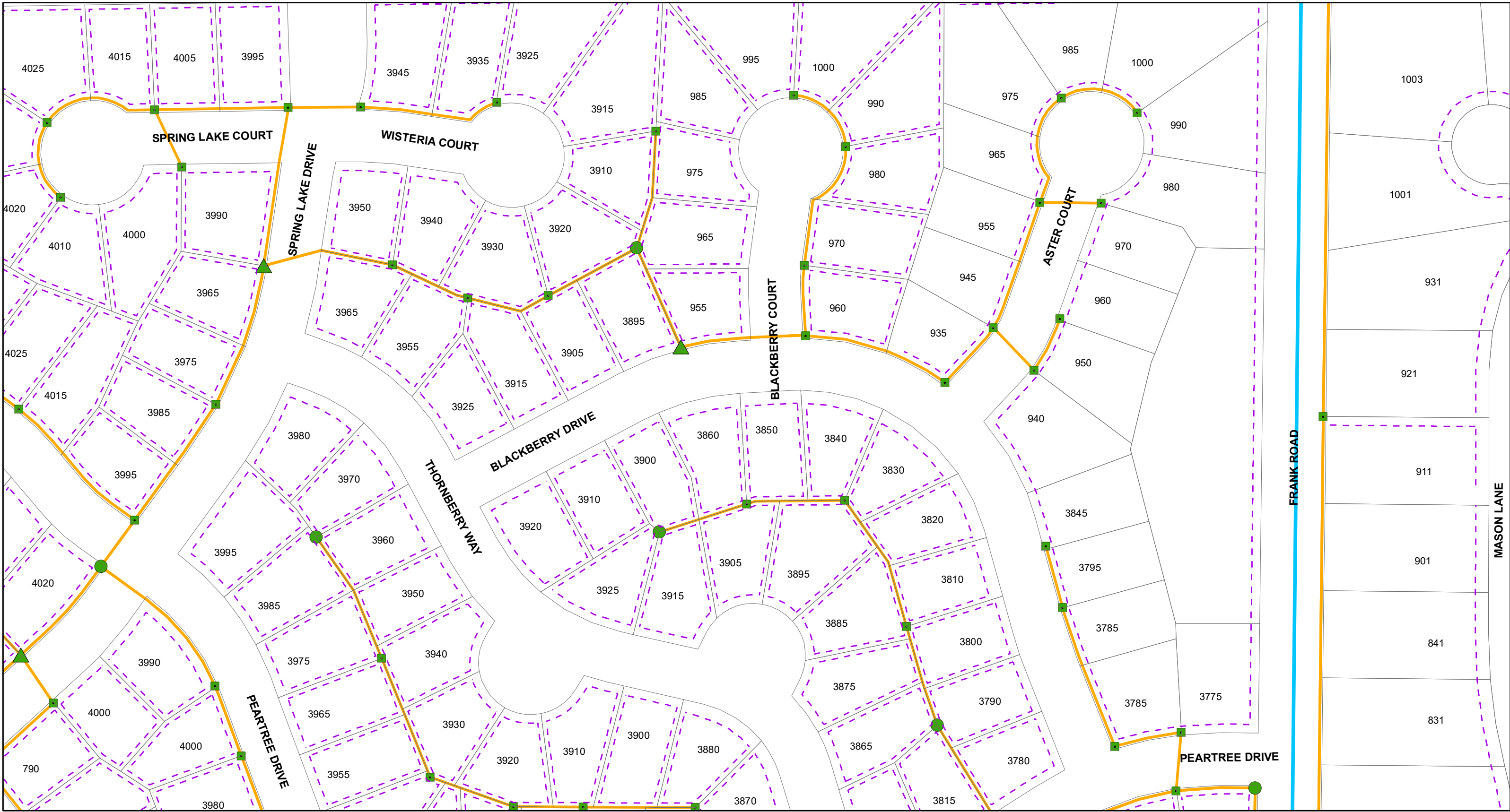


Legend	
	Sector Boundary
	Utility Easement
	Parcels
	Handhole
	HDPE 9"x14"
	HDPE 12"x20"
	HDPE 17"x30"
	HDPE 24"x36"
	Tier 15 12"x12"
	Tier 15 11"x18"
	Tier 15 17"x30"
	Duct(s)

- Conduit installation will be done by directional and missile bore.  
 - Standard installation is (1) or (2) 1.25" HDPE conduits. A 3rd 1.25" conduit may be added on rare occasions.  
 - When in ROW, handholes will be installed within 1' of ROW line, and path of duct/fiber will be within 5' of ROW line. Any needed variance to this placement will be requested in advance and completed only upon approval



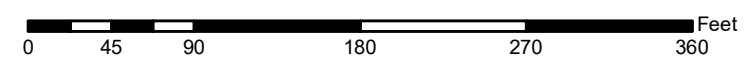
# i3 Broadband Permit Request - NWCHIL2001



**Legend**

- Sector Boundary
- Utility Easement
- Parcels
- Handhole
  - HDPE 9"x14"
  - HDPE 12"x20"
  - ▲ HDPE 17"x30"
- HDPE 24"x36"
- Tier 15 12"x12"
- Tier 15 11"x18"
- Tier 15 17"x30"
- Duct(s)

- Conduit installation will be done by directional and missile bore.
- Standard installation is (1) or (2) 1.25" HDPE conduits. A 3rd 1.25" conduit may be added on rare occasions.
- When in ROW, handholes will be installed within 1' of ROW line, and path of duct/fiber will be within 5' of ROW line. Any needed variance to this placement will be requested in advance and completed only upon approval



# i3 Broadband Permit Request - NWCHIL2001



**Legend**

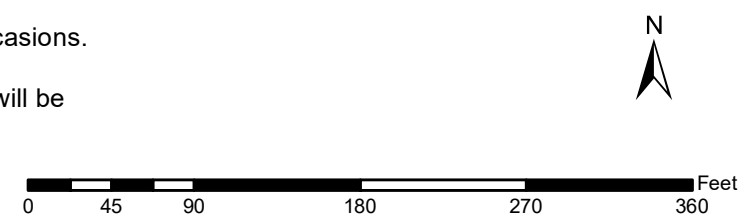
- Sector Boundary
- Utility Easement
- Parcels

**Handhole**

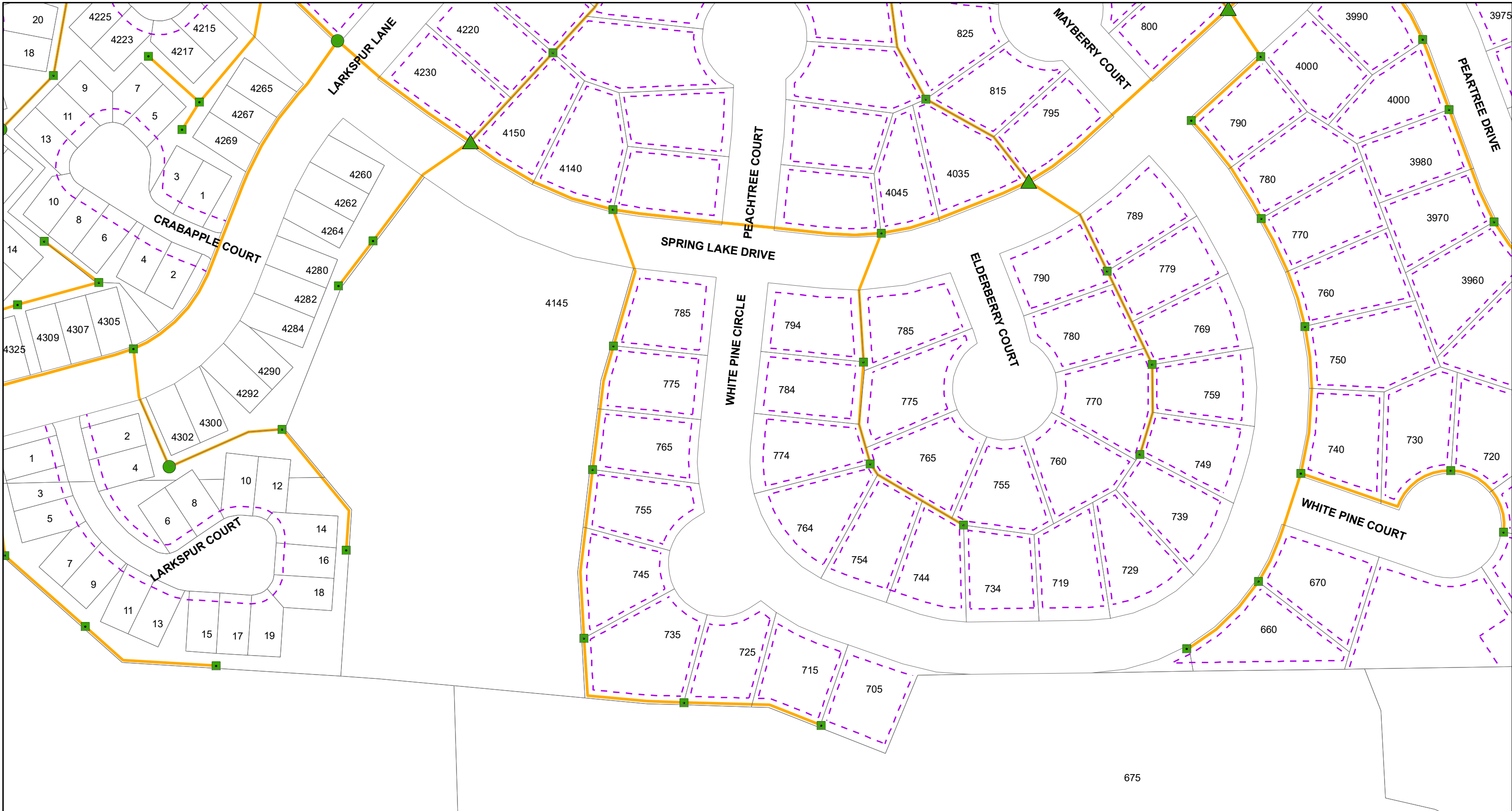
- HDPE 9"x14"
- HDPE 12"x20"
- HDPE 17"x30"
- HDPE 24"x36"
- Tier 15 12"x12"
- Tier 15 11"x18"
- Tier 15 17"x30"

Duct(s)

- Conduit installation will be done by directional and missile bore.  
 - Standard installation is (1) or (2) 1.25" HDPE conduits. A 3rd 1.25" conduit may be added on rare occasions.  
 - When in ROW, handholes will be installed within 1' of ROW line, and path of duct/fiber will be within 5' of ROW line. Any needed variance to this placement will be requested in advance and completed only upon approval

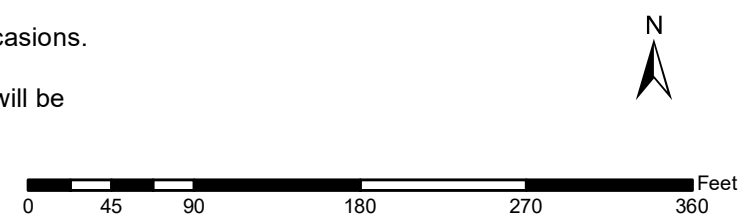


# i3 Broadband Permit Request - NWCHIL2001



Legend	
	Sector Boundary
	Utility Easement
	Parcels
	Handhole
	HDPE 9"x14"
	HDPE 12"x20"
	HDPE 17"x30"
	HDPE 24"x36"
	Tier 15 12"x12"
	Tier 15 11"x18"
	Tier 15 17"x30"
	Duct(s)

- Conduit installation will be done by directional and missile bore.  
 - Standard installation is (1) or (2) 1.25" HDPE conduits. A 3rd 1.25" conduit may be added on rare occasions.  
 - When in ROW, handholes will be installed within 1' of ROW line, and path of duct/fiber will be within 5' of ROW line. Any needed variance to this placement will be requested in advance and completed only upon approval

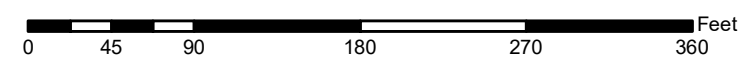


# i3 Broadband Permit Request - NWCHIL2001



Legend	
	Sector Boundary
	Utility Easement
	Parcels
	Handhole
	HDPE 9"x14"
	HDPE 12"x20"
	HDPE 17"x30"
	HDPE 24"x36"
	Tier 15 12"x12"
	Tier 15 11"x18"
	Tier 15 17"x30"
	Duct(s)

- Conduit installation will be done by directional and missile bore.  
 - Standard installation is (1) or (2) 1.25" HDPE conduits. A 3rd 1.25" conduit may be added on rare occasions.  
 - When in ROW, handholes will be installed within 1' of ROW line, and path of duct/fiber will be within 5' of ROW line. Any needed variance to this placement will be requested in advance and completed only upon approval



# i3 Broadband Permit Map - NWCHIL2001



- Conduit installation will be done by directional and missile bore.
- Standard installation is (1) or (2) 1.25" HDPE conduits. A 3rd 1.25" conduit may be added on rare occasions.
- When in ROW, handholes will be installed within 1' of ROW line, and path of duct/fiber will be within 5' of ROW line. Any needed variance to this placement will be requested in advance and completed only upon approval

