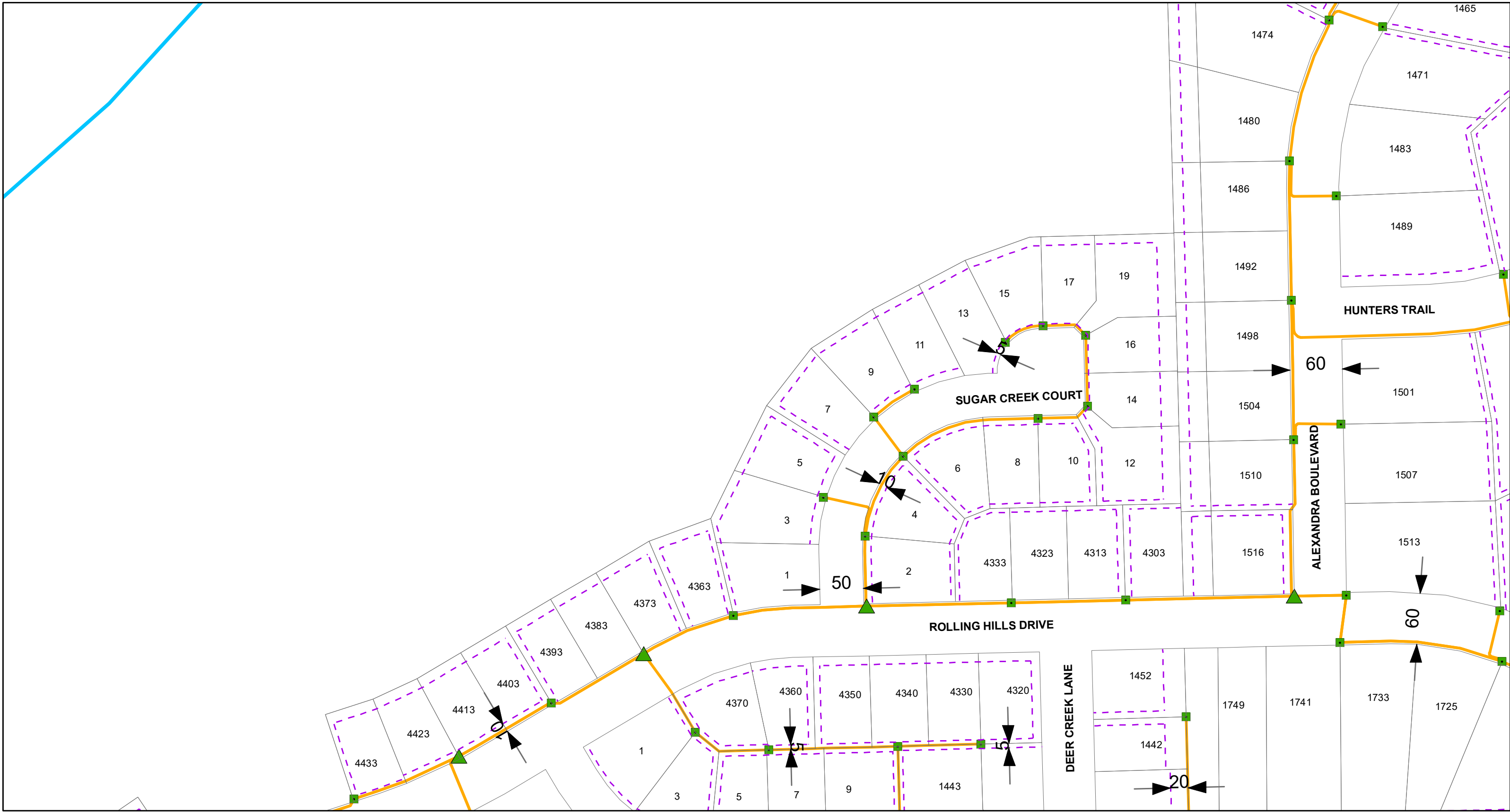


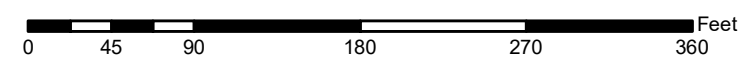
i3 Broadband Permit Request - NWCHIL2002



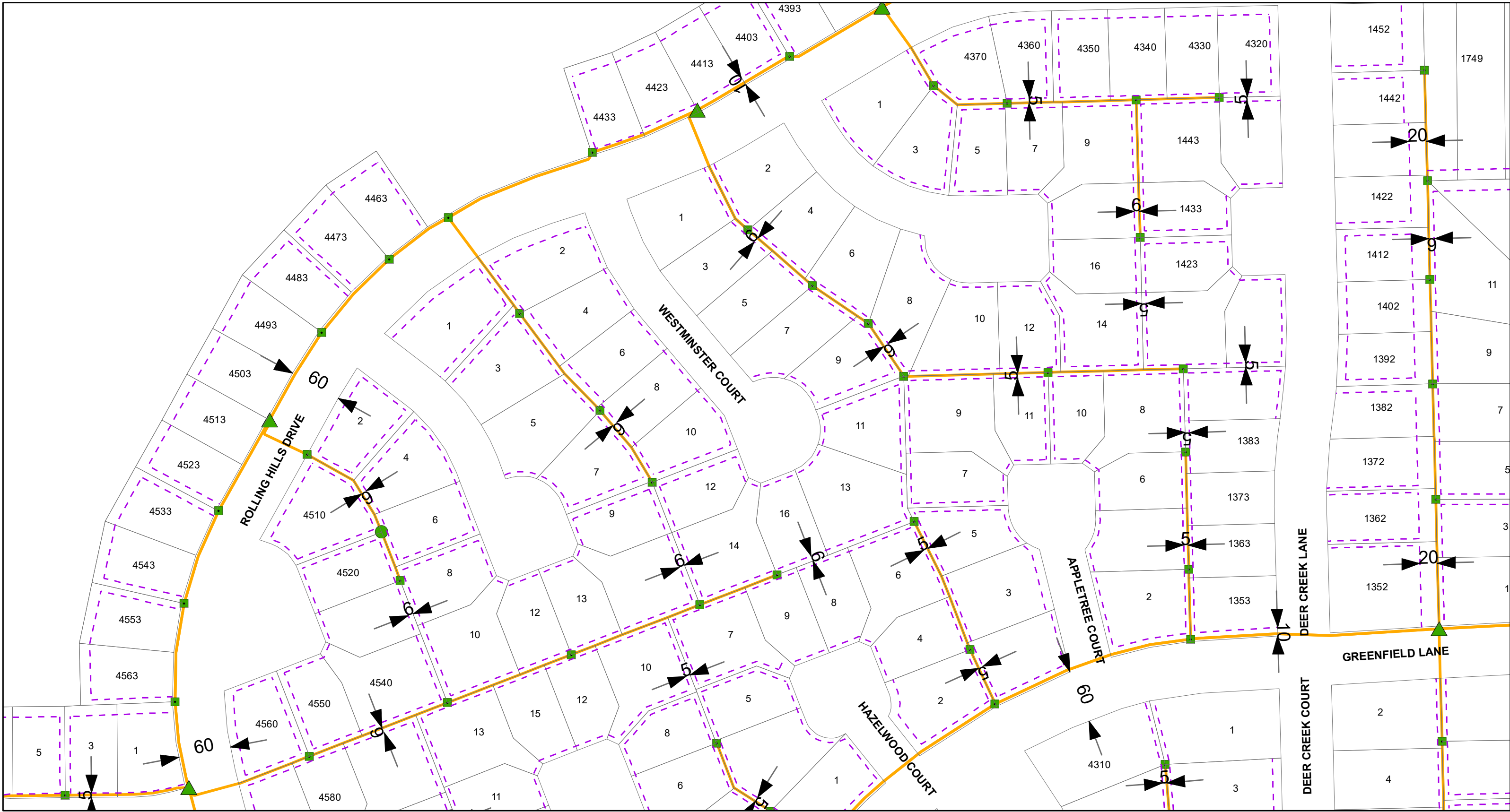
Legend

| | | |
|------------------|-----------------|-----------------|
| Sector Boundary | Handhole | HDPE 24"x36" |
| Utility Easement | HDPE 9"x14" | Tier 15 12"x12" |
| Parcels | HDPE 12"x20" | Tier 15 11"x18" |
| | HDPE 17"x30" | Tier 15 17"x30" |
| | | Duct(s) |

- Conduit installation will be done by directional and missile bore.
- Standard installation is (1) or (2) 1.25" HDPE conduits. A 3rd 1.25" conduit may be added on rare occasions.
- When in ROW, handholes will be installed within 1' of ROW line, and path of duct/fiber will be within 5' of ROW line. Any needed variance to this placement will be requested in advance and completed only upon approval



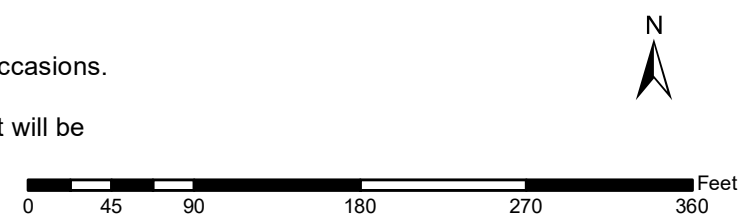
i3 Broadband Permit Request - NWCHIL2002



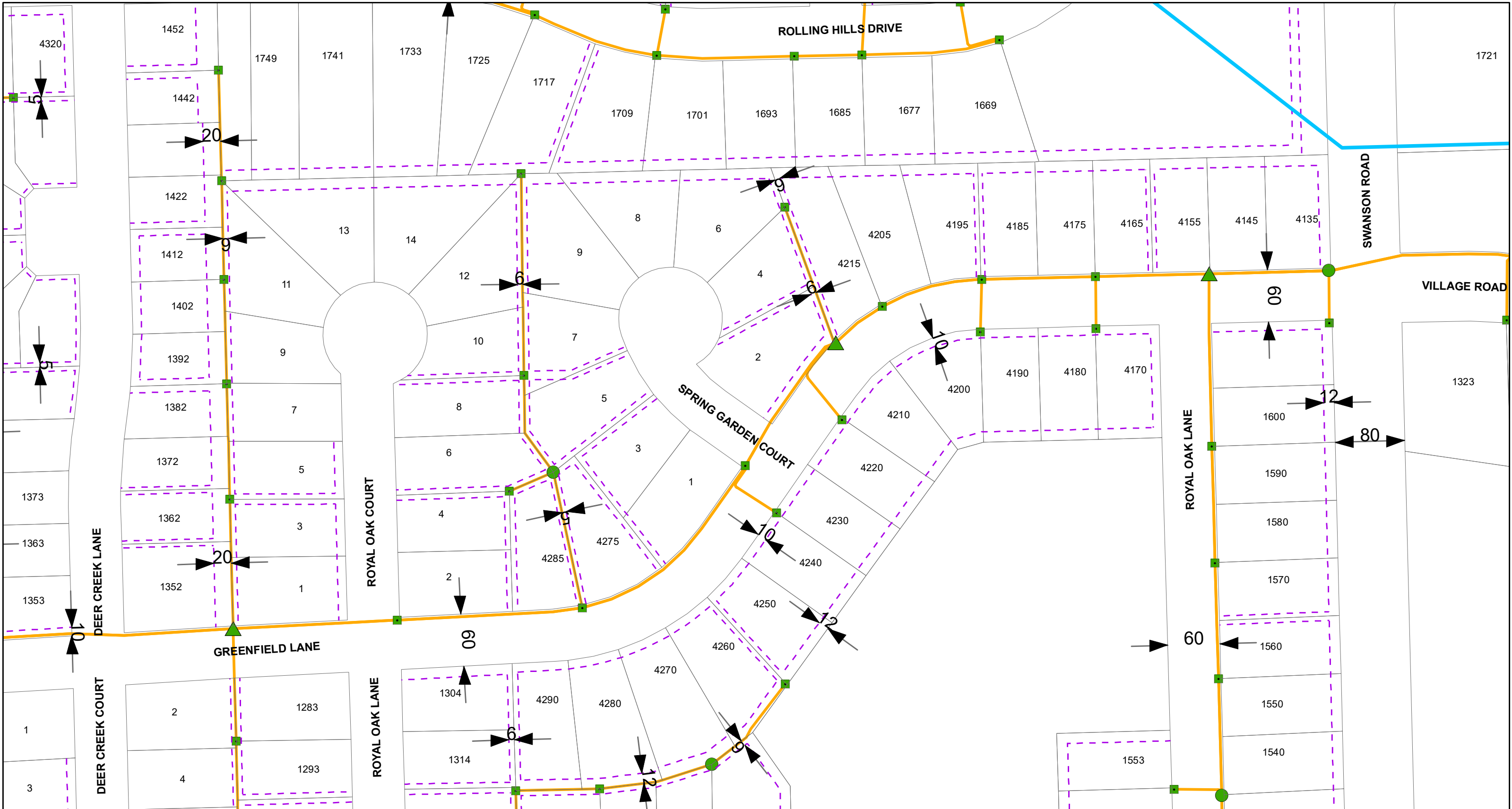
Legend

| | | |
|------------------|--------------|-----------------|
| Sector Boundary | HDPE 9"x14" | HDPE 24"x36" |
| Utility Easement | HDPE 12"x20" | Tier 15 12"x12" |
| Parcels | HDPE 17"x30" | Tier 15 11"x18" |
| | | Tier 15 17"x30" |
| | | Duct(s) |

- Conduit installation will be done by directional and missile bore.
- Standard installation is (1) or (2) 1.25" HDPE conduits. A 3rd 1.25" conduit may be added on rare occasions.
- When in ROW, handholes will be installed within 1' of ROW line, and path of duct/fiber will be within 5' of ROW line. Any needed variance to this placement will be requested in advance and completed only upon approval

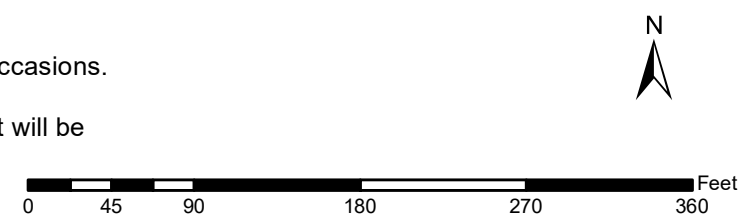


i3 Broadband Permit Request - NWCHIL2002

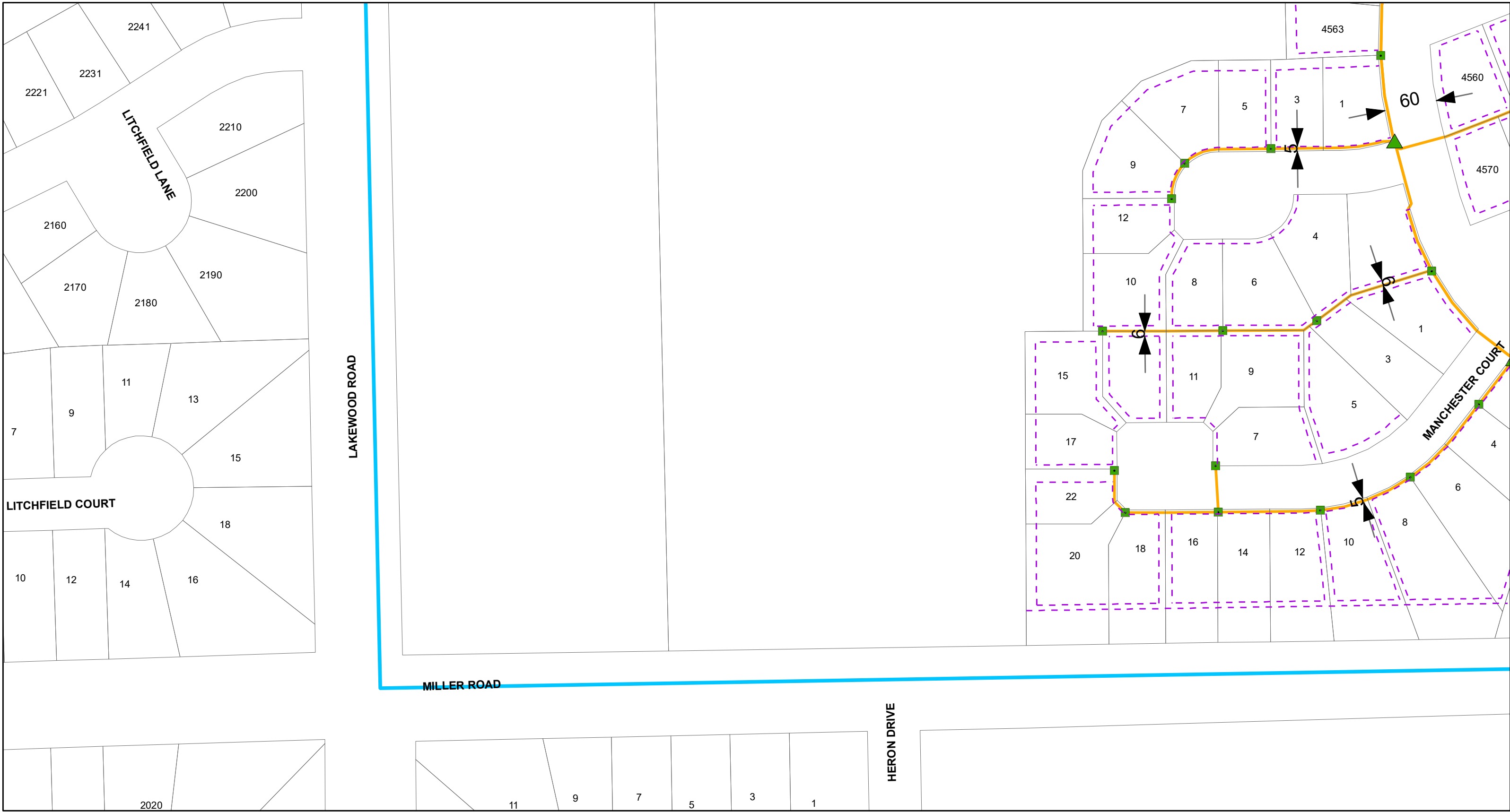


| Legend | |
|--------|------------------|
| | Sector Boundary |
| | Utility Easement |
| | Parcels |
| | Handhole |
| | HDPE 9"x14" |
| | HDPE 24"x36" |
| | HDPE 12"x20" |
| | Tier 15 12"x12" |
| | Tier 15 11"x18" |
| | Tier 15 17"x30" |
| | Duct(s) |

- Conduit installation will be done by directional and missile bore.
- Standard installation is (1) or (2) 1.25" HDPE conduits. A 3rd 1.25" conduit may be added on rare occasions.
- When in ROW, handholes will be installed within 1' of ROW line, and path of duct/fiber will be within 5' of ROW line. Any needed variance to this placement will be requested in advance and completed only upon approval



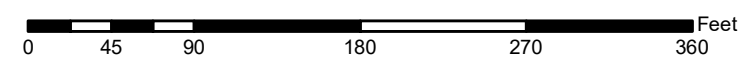
i3 Broadband Permit Request - NWCHIL2002



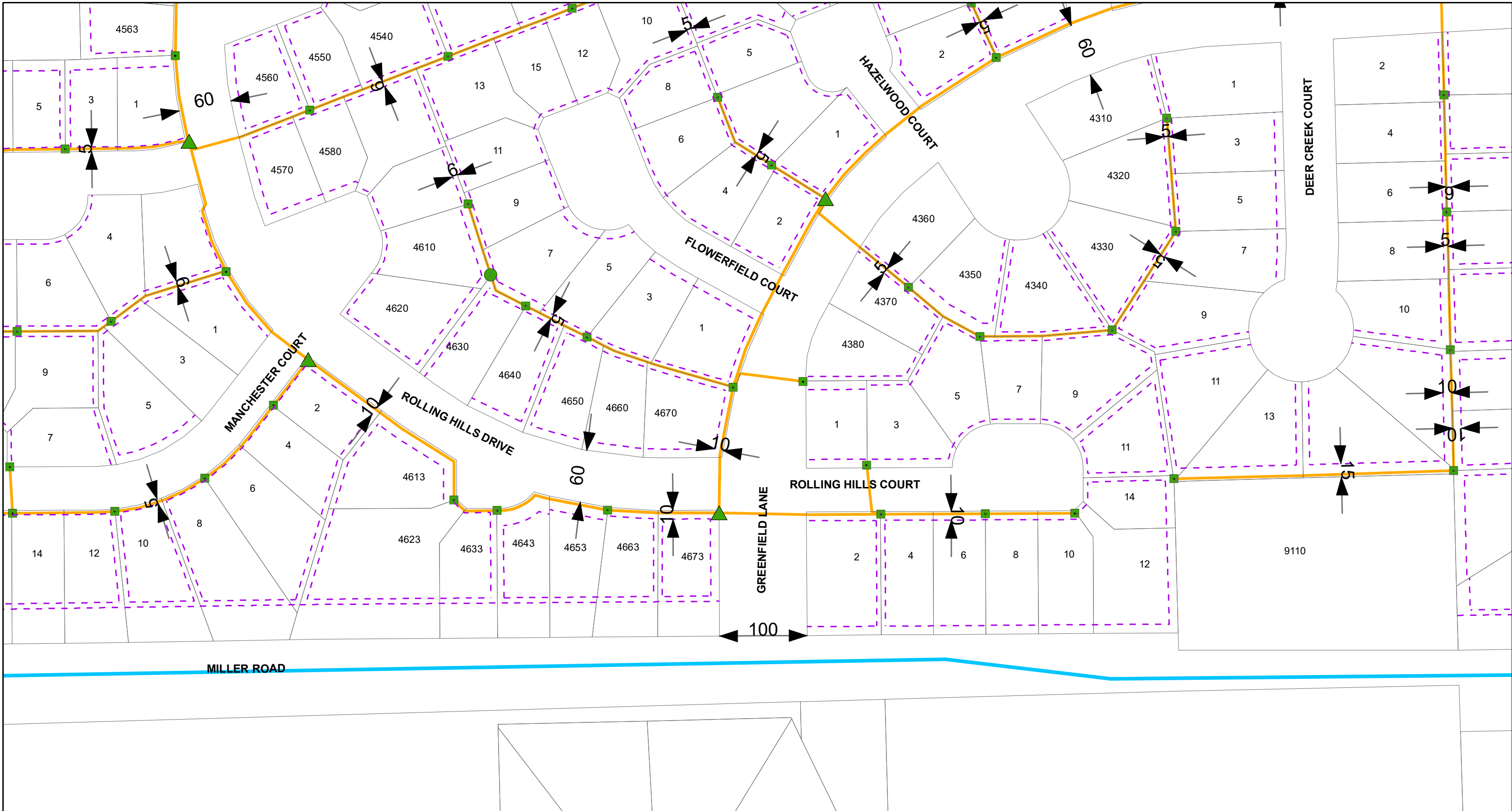
Legend

| | | |
|------------------|-----------------|-----------------|
| Sector Boundary | Handhole | HDPE 24"x36" |
| Utility Easement | HDPE 9"x14" | Tier 15 12"x12" |
| Parcels | HDPE 12"x20" | Tier 15 11"x18" |
| | HDPE 17"x30" | Tier 15 17"x30" |
| | | Duct(s) |

- Conduit installation will be done by directional and missile bore.
- Standard installation is (1) or (2) 1.25" HDPE conduits. A 3rd 1.25" conduit may be added on rare occasions.
- When in ROW, handholes will be installed within 1' of ROW line, and path of duct/fiber will be within 5' of ROW line. Any needed variance to this placement will be requested in advance and completed only upon approval

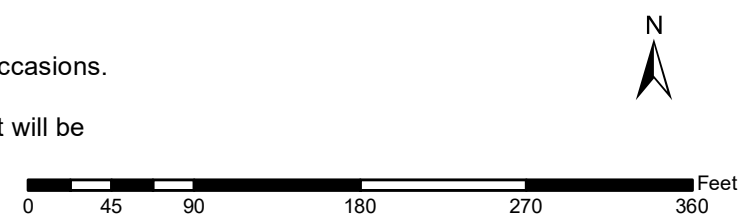


i3 Broadband Permit Request - NWCHIL2002

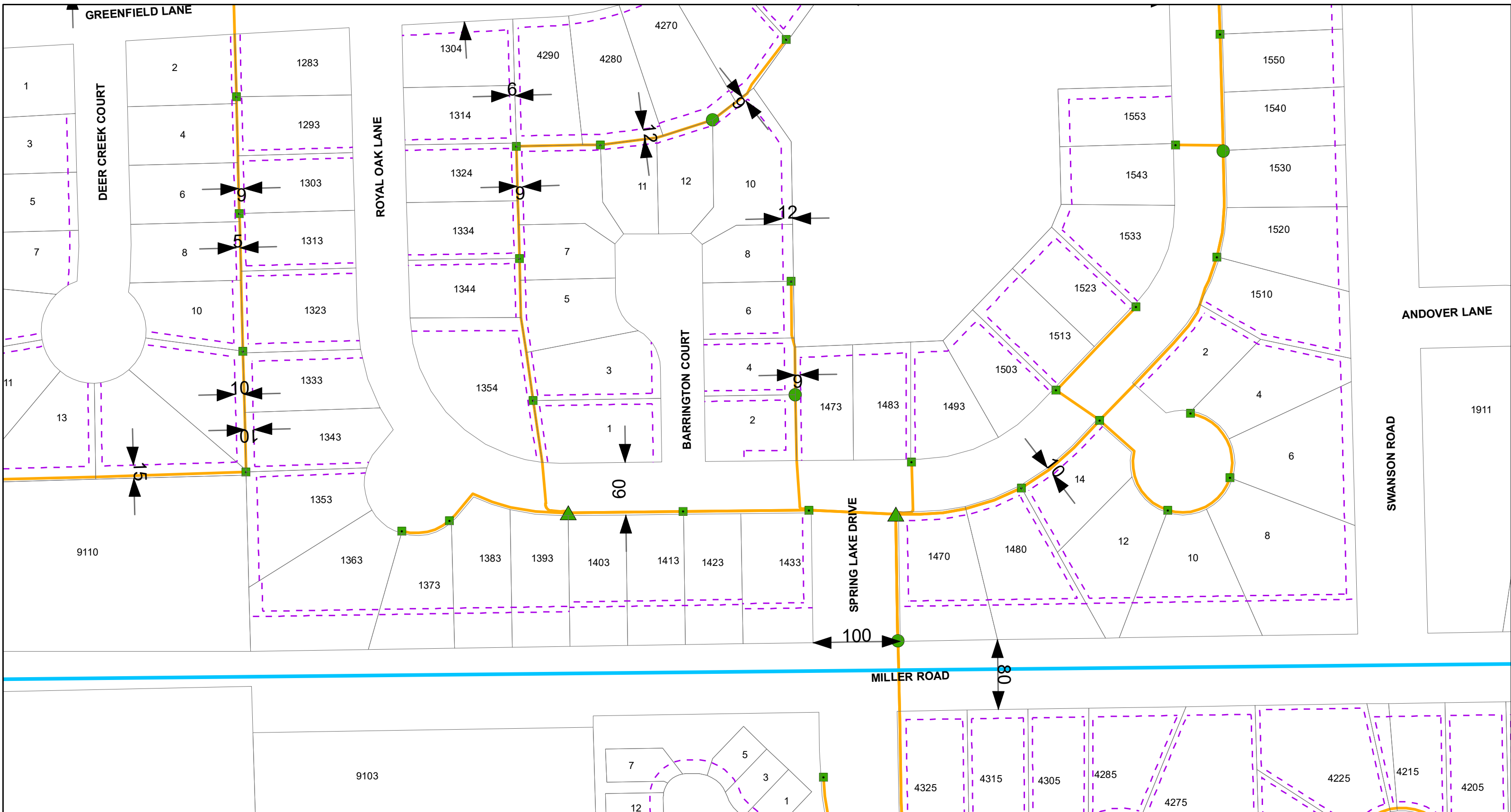


| Legend | |
|--------|------------------|
| | Sector Boundary |
| | Utility Easement |
| | Parcels |
| | Handhole |
| | HDPE 9"x14" |
| | HDPE 12"x20" |
| | HDPE 17"x30" |
| | HDPE 24"x36" |
| | Tier 15 12"x12" |
| | Tier 15 11"x18" |
| | Tier 15 17"x30" |
| | Duct(s) |

- Conduit installation will be done by directional and missile bore.
- Standard installation is (1) or (2) 1.25" HDPE conduits. A 3rd 1.25" conduit may be added on rare occasions.
- When in ROW, handholes will be installed within 1' of ROW line, and path of duct/fiber will be within 5' of ROW line. Any needed variance to this placement will be requested in advance and completed only upon approval

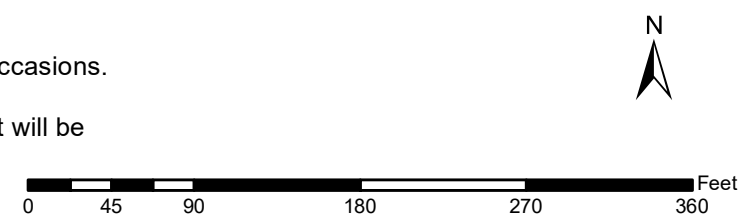


i3 Broadband Permit Request - NWCHIL2002

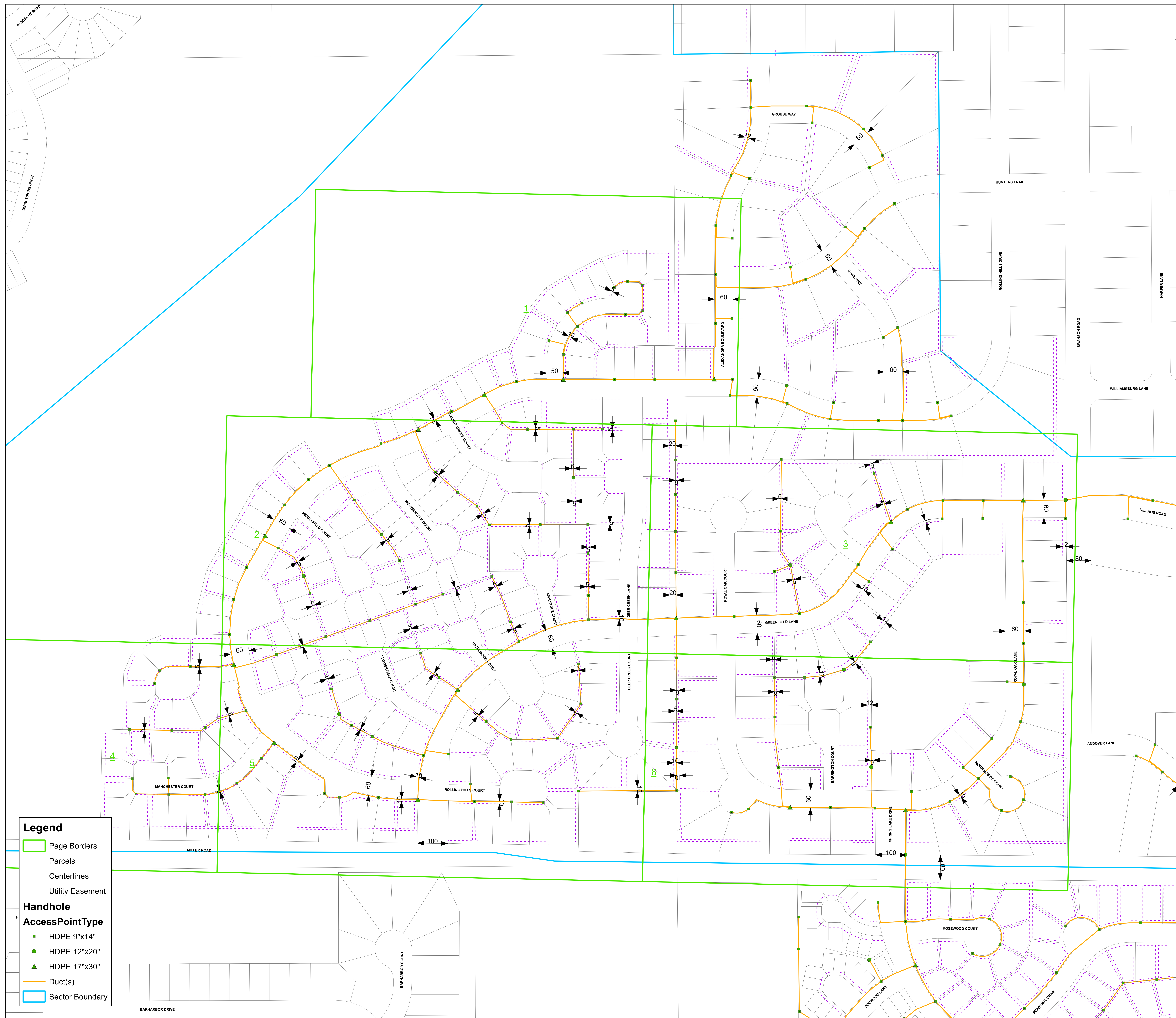


| Legend | |
|--------|------------------|
| | Sector Boundary |
| | Utility Easement |
| | Parcels |
| | Handhole |
| | HDPE 9"x14" |
| | HDPE 12"x20" |
| | HDPE 17"x30" |
| | HDPE 24"x36" |
| | Tier 15 12"x12" |
| | Tier 15 11"x18" |
| | Tier 15 17"x30" |
| | Duct(s) |

- Conduit installation will be done by directional and missile bore.
- Standard installation is (1) or (2) 1.25" HDPE conduits. A 3rd 1.25" conduit may be added on rare occasions.
- When in ROW, handholes will be installed within 1' of ROW line, and path of duct/fiber will be within 5' of ROW line. Any needed variance to this placement will be requested in advance and completed only upon approval



i3 Broadband Permit Map - NWCHIL2002



Legend

- Page Borders
- Parcels
- Centerlines
- Utility Easement

Handhole

AccessPointType

- HDPE 9"x14"
- HDPE 12"x20"
- HDPE 17"x30"

- Duct(s)
- Sector Boundary

- Conduit installation will be done by directional and missile bore.
- Standard installation is (1) or (2) 1.25" HDPE conduits. A 3rd 1.25" conduit may be added on rare occasions.
- When in ROW, handholes will be installed within 1' of ROW line, and path of duct/fiber will be within 5' of ROW line. Any needed variance to this placement will be requested in advance and completed only upon approval

