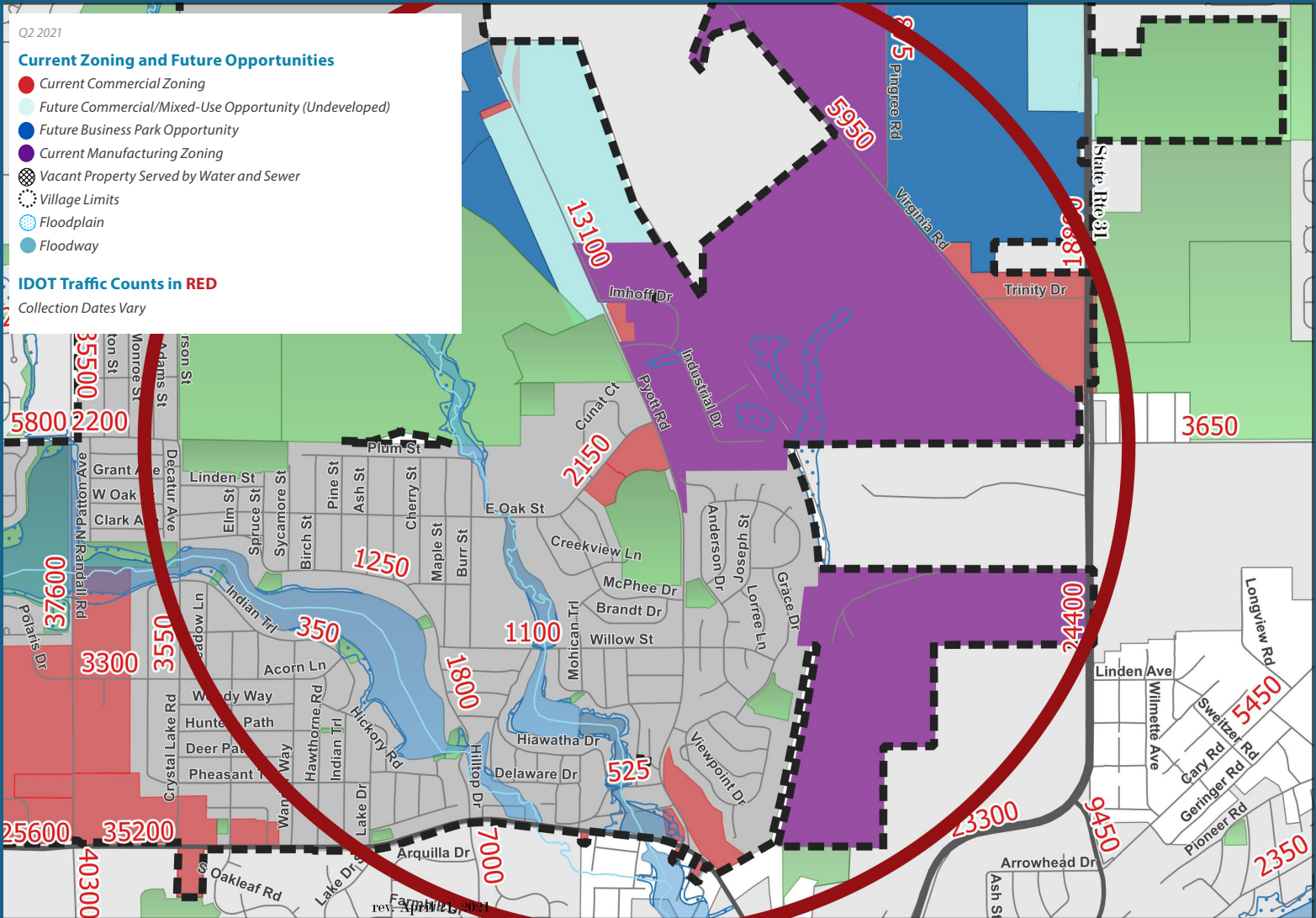




PYOTT ROAD/EAST OAK STREET MARKET AREA #5 DEVELOPMENT PROFILE



PYOTT ROAD/EAST OAK STREET MARKET AREA #5 DEMOGRAPHICS

ONE MILE RADIUS SHOWN ON MAP		POPULATION	MEDIAN HOUSEHOLD INCOME	PER CAPITA INCOME	OCCUPIED HOUSING UNITS	OWNER-OCCUPIED UNITS	MEDIAN HOME VALUE
1-Mile Radius	Estimate	5,744	\$73,277	\$34,666	2,273	1,669	\$187,582
	%	-	-	-	-	70.4%	-
3-Mile Radius	Estimate	64,487	\$99,392	\$41,300	23,290	19,274	\$224,228
	%	-	-	-	-	78.7%	-
5-Mile Radius	Estimate	164,466	\$97,936	\$40,714	55,876	46,905	\$240,943
	%	-	-	-	-	80.0%	-

ESRI 2020 Estimates. Portions of this document include intellectual property of Esri and its licensors and are used under license. Copyright © 2019 - 2021 Esri and its licensors. All rights reserved.



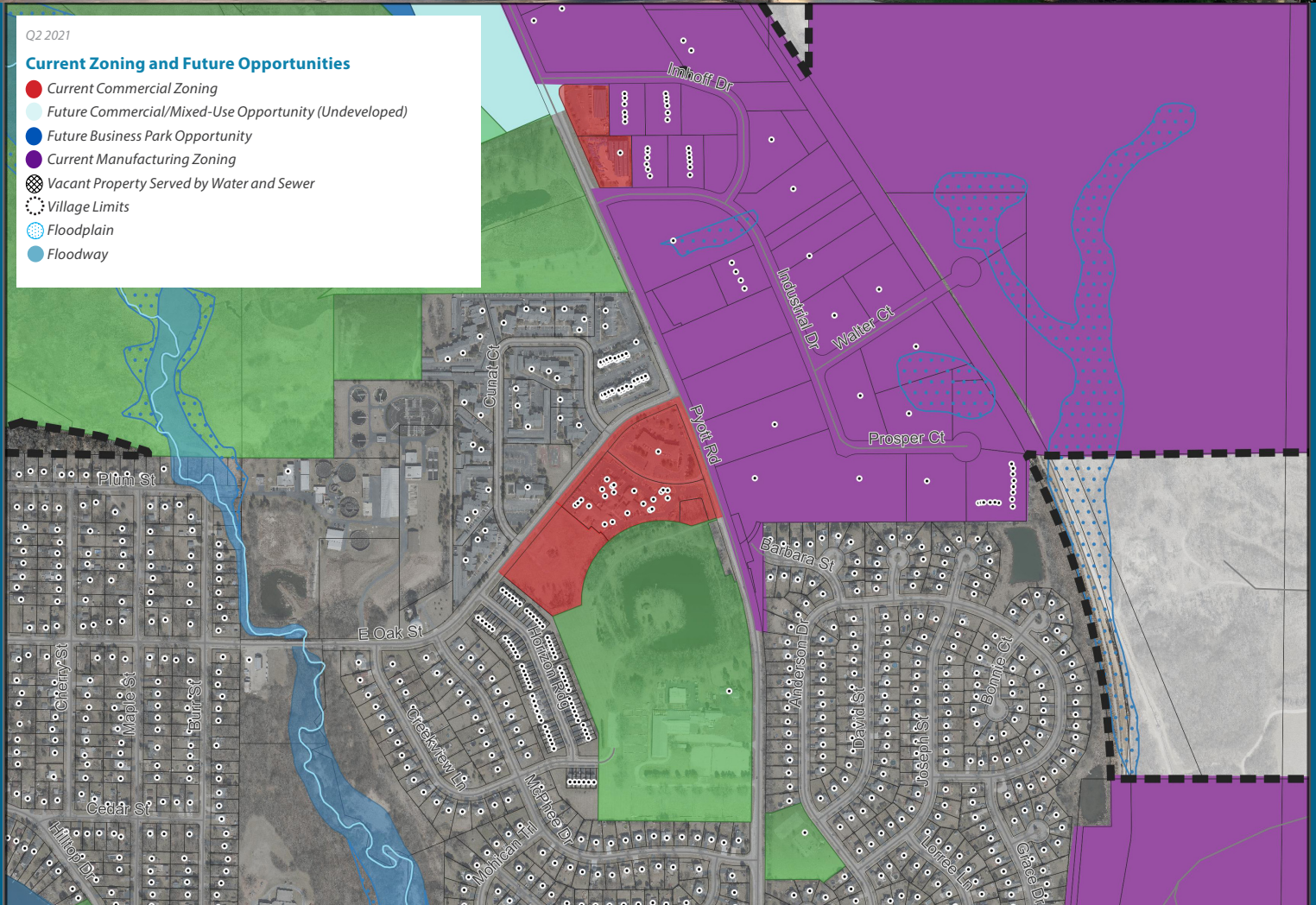
PYOTT ROAD/EAST OAK STREET MARKET AREA #5 DEVELOPMENT PROFILE



Q2 2021

Current Zoning and Future Opportunities

- Current Commercial Zoning
- Future Commercial/Mixed-Use Opportunity (Undeveloped)
- Future Business Park Opportunity
- Current Manufacturing Zoning
- Vacant Property Served by Water and Sewer
- Village Limits
- Floodplain
- Floodway



The Village of Lake in the Hills is available to answer any questions regarding development and business opportunities. For additional demographics, market data, and incentive programs, please call the Community Development Department.

DJ Fiore
Economic Development Coordinator

(224) 817-1435
 dfiore@lith.org

Joshua Langen
Community and Economic Development Director

(847) 960-7441
 jlange@lith.org
 lith.org/business

